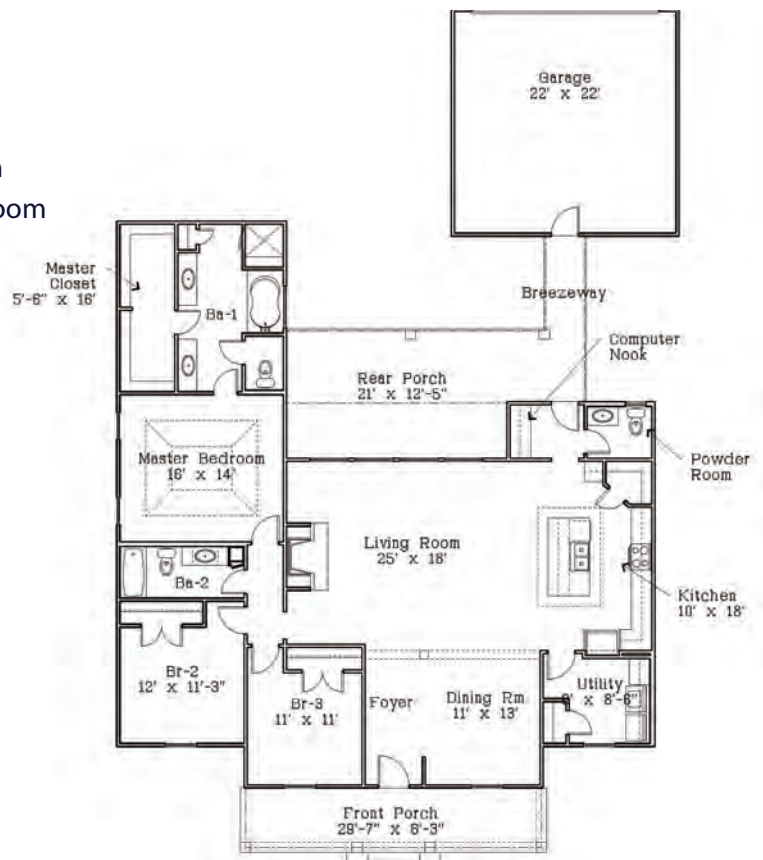


**1328 Natchez Loop
Lot 130
The Village
Covington, LA**

\$363,000



- Open floor plan
- 2017 sq. ft. living area / 3041 sq. ft. total area
- 3 bedrooms, 2 1/2 baths
- 10' ceiling throughout
- Wood floors in living area & master bedroom
- Vaulted ceiling in master bedroom & great room
- Granite in kitchen & bathrooms
- Custom wood shelving
- Tongue and Groove ceiling in kitchen
- Bevolo gas lantern
- Large front porch with 4 Timber Post Columns
- Brick flooring on porch with dropped Brick Ledge
- Large Rear Covered Porch with Breeze Way to Double Car Garage
- Hardy plank exterior
- Attached garage w/ rear alley access
- Professionally landscaped
- Professionally decorated by Bmac Interiors at TerraBella
- Interior timber beams



(985) 898-2214 • cell (985) 966-5892

www.conbeth.com