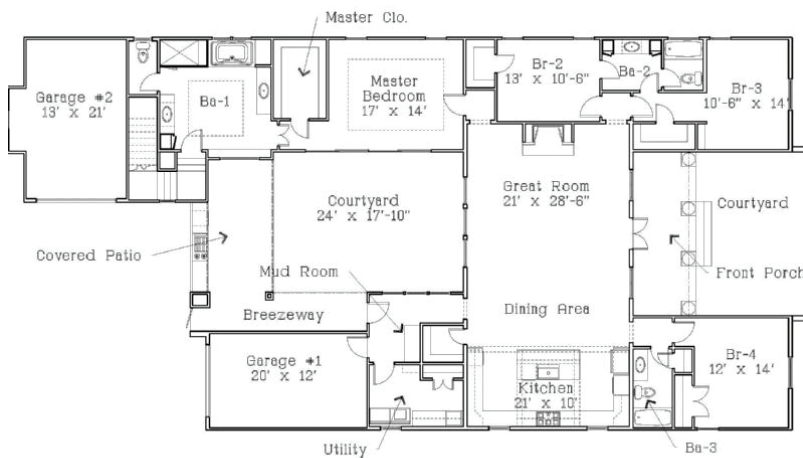




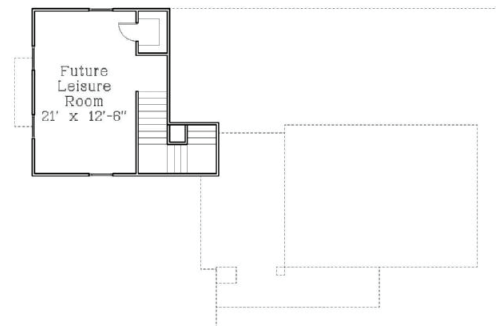
**408 Melrose Place  
Lot 543  
TerraBella Village  
Covington, LA**

**\$659,000**

- New Construction
- 2,900 sq.ft. living area / 3,973 sq.ft. total area
- 4 bedroom, 3 bath
- Completely private interior courtyard with professional landscaping
- Open floor plan highlights private interior courtyard
- 12 and 10 foot ceilings throughout
- Wood floors
- Vaulted ceiling in Master Bedroom
- Vaulted ceiling in Living Room with Tongue-n-Groove
- Granite in kitchen & bathrooms
- Custom wood shelving
- Bevolo gas lantern
- Located on one of TerraBella's parks
- Moments to Town Square
- Professionally decorated by Bmac Interiors at TerraBella



Lower Level Floor Plan



Upper Level Floor Plan



**(985) 898-2214 • cell (985) 966-5892**

**[www.conbeth.com](http://www.conbeth.com)**