

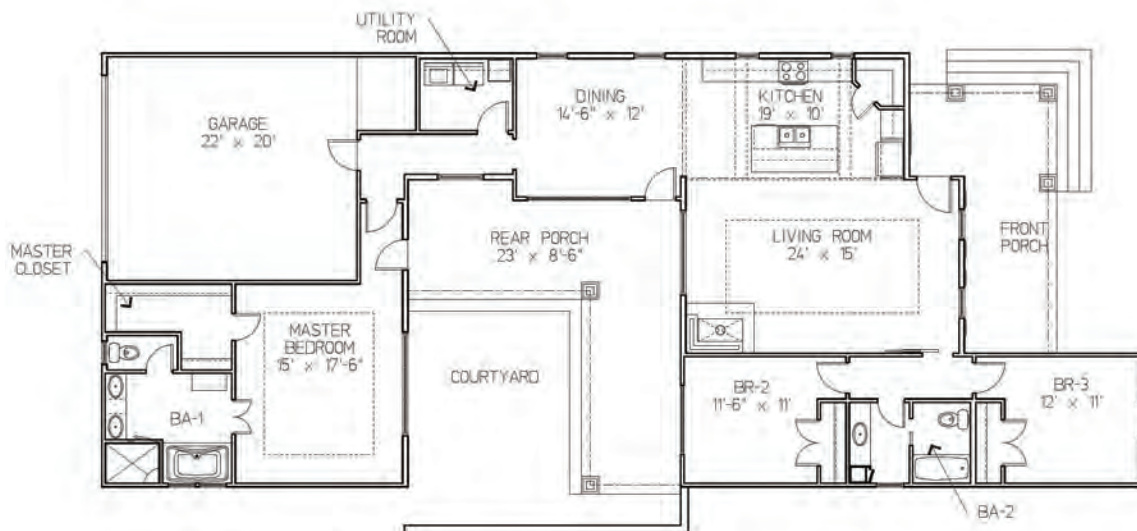


Dumaine Cottage

921 Beauregard Pkwy.
Lot 227, Corner Lot
TerraBella Village
Covington

\$392,375

- Open floor plan
- New cottage design in TerraBella
- 1865 sq.ft. living area / 2925 sq. ft. total area
- 3 bedroom, 2 bath
- Interior wood ceiling beams
- Cathedral ceiling in kitchen & dining room
- Wood floors in living area and master bedroom
- Vaulted ceiling in master bedroom
- Granite in kitchen & bathrooms
- Bevolo gas lantern
- Stacked stone front columns
- Wrap around front porch
- Large side courtyard for entertaining
- Two car garage with rear alley entry
- Professionally landscaped
- Professionally decorated by Bmac Interiors at TerraBella



Price and amenities subject to change by builder without notice.



(985) 898-2214 • cell (985) 966-5892

www.conbeth.com